

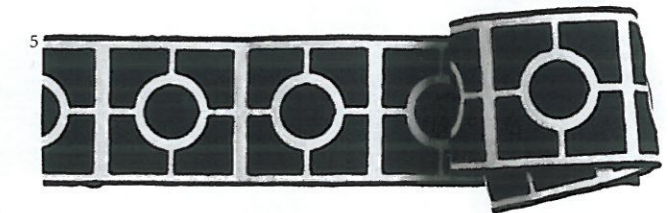
# LUKE IRWIN

— LONDON —

BESPOKE HANDMADE RUGS

WWW.LUKEIRWIN.COM

20 - 22 PIMLICO ROAD LONDON SW1W 8LJ +44 (0)207 730 6070



PHOTOGRAPHY: SUDHIR PITHWA (6, 7)

1 'Paul et Virginie', from £3,200 per 1.41 x 1.65m panel, Zuber. 2 'Hexagonal Pineapple' hanging lantern, £2,820, Charles Edwards. 3 From top: 'Keri' blockprint pillow, £223 approx; 'Chelsea' blockprint pillow, £223 approx; both Madeline Weinrib. 4 'Coral Drum' table, £2,250, Virginia White Collection. 5 Onyx 'Palladio' embroidered border, £123 per m, Samuel & Sons. 6 'Keswick' armchair, £2,616, McKinnon & Harris. 7 From top: Massa 'Arabesque' tile, £119.85 per sq m; Bahia cream 'Marrakech' tile, £683.93 per sq m; both Fired Earth. 8 From top: Jet 'Fez', £870 per sq m; Jet 'Hexagonal Chain', £870 per sq m; both Vanderhurd. All prices include VAT. For suppliers' details see Address Book >